

2023 Annual Meeting

March 9, 2023



the Network
Supportive Housing Network of NY

2022 Supportive Housing Openings



AIM Independent Living Center

254 East First Street



- ❑ 5 units, individuals
 - ❑ 5 supportive units
- ❑ Funding
 - ❑ *Capital*: HHAP
 - ❑ *Operations/ Services*: ESSHI
OTDA
- ❑ Architect
 - ❑ Foor and Associates
- ❑ Contractor
 - ❑ Elmira Structures

254 East First St., Corning

Breaking Ground

90 Sands



90 Sands, Brooklyn

- ❑ 490 units, individuals and families
 - ❑ 305 supportive, individuals
- ❑ Funding
 - ❑ *Capital:* HPD, HDC, Enterprise Settlement Funds, FHLB, Reso A, Leviticus Fund
 - ❑ *Operations/ Services:* NYC 15/15
- ❑ Architect
 - ❑ Beyer Blinder Belle
- ❑ Contractor
 - ❑ Monadnock Construction

CARES, Inc.

Elm Street/Second Street

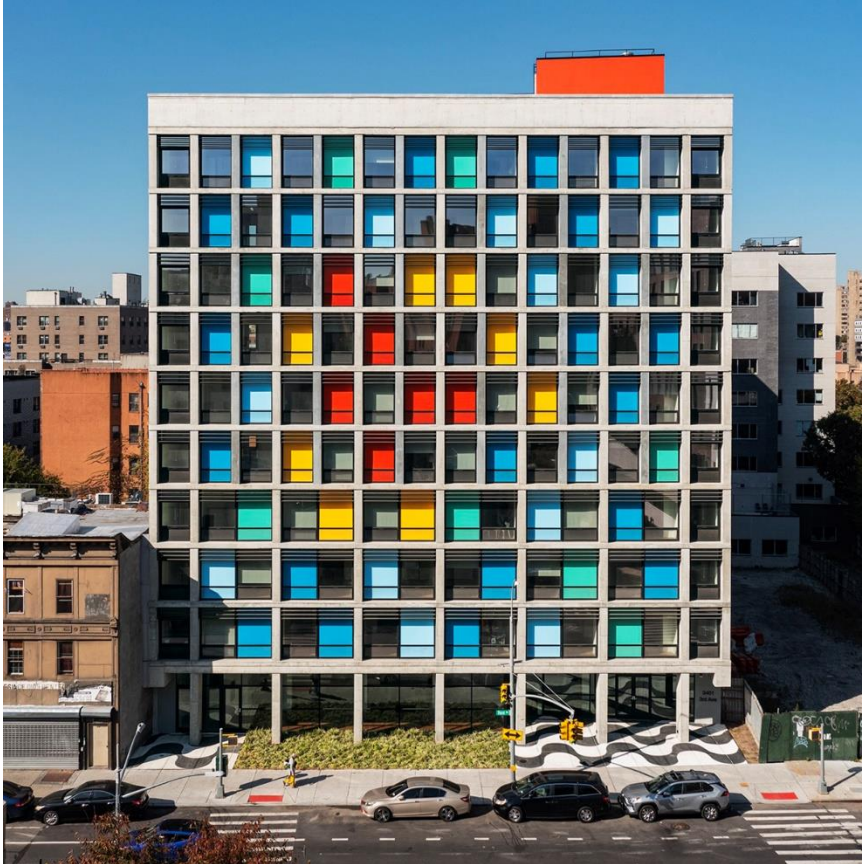


135 Dove Street, Albany

- ❑ 15 units, individuals and families
 - ❑ 15 supportive units
- ❑ Funding
 - ❑ *Capital:* HHAP
 - ❑ *Operations/ Services:* ESSHI
OTDA
- ❑ Architect
 - ❑ Harris A. Sanders Architects
PC

Comunilife, Inc.

El Borinquen Residence



3401 Third Avenue, Bronx

- ❑ 147 units, individuals
 - ❑ 90 supportive units
- ❑ Funding
 - ❑ *Capital:* HFA, HCR, HPD, CSH
 - ❑ *Operations/Services:* ESSHI DOH
- ❑ Architect
 - ❑ Alexander Gorlin Architects
- ❑ Contractor
 - ❑ Mega Construction
- ❑ Syndicator
 - ❑ Red Stone Equity Partners

DePaul

Lock 7 Apartments Oswego



220 East First Street, Oswego

- ❑ 80 units, individuals and families
 - ❑ 40 supportive units, individuals
- ❑ Funding
 - ❑ *Capital:* HCR, HHAP, CPC, OMH, NYSERDA, FHLB
 - ❑ *Operations/ Services:* ESSHI OMH
- ❑ Architect
 - ❑ SWBR Architects
- ❑ Contractor
 - ❑ Christa Construction
- ❑ Syndicator
 - ❑ Red Stone Equity Partners

Housing and Services, Inc.

The Bedford



211 East 203rd St, Bronx

- ❑ 107 units, individuals and families
 - ❑ 66 supportive units, individuals
- ❑ Funding
 - ❑ *Capital:* HPD, Webster Bank, FHLB, NYSERDA, CSH
 - ❑ *Operations/Services:* HPD, NYC 15/15
- ❑ Architect
 - ❑ Magnusson Architecture and Planning
- ❑ Contractor
 - ❑ Procida Construction
- ❑ Syndicator
 - ❑ Hudson Housing Capital

Housing Visions Northwoods



159 Plaza Blvd, Plattsburgh

- ❑ 80 units, individuals and families
 - ❑ 40 supportive units, individuals and families
- ❑ Funding
 - ❑ *Capital:* HCR, M&T Bank, NYSERDA, CSH
 - ❑ *Operations/ Services:* OMH ESSHI
- ❑ Architect
 - ❑ Architectural Engineering and Design Associates
- ❑ Contractor
 - ❑ Housing Visions Contractors
- ❑ Syndicator
 - ❑ National Equity Fund

Institute for Community Living (ICL)

50 Nevins



50 Nevins Street, Brooklyn

- ❑ 129 units, individuals and families
 - ❑ 105 supportive units, individuals and families

- ❑ Funding
 - ❑ *Capital:* HCR , HFA, HPD, OMH
 - ❑ *Operations/ Services:* OMH ESSHI, NYC 15/15

- ❑ Architect
 - ❑ Dattner and Associates

- ❑ Contractor
 - ❑ Mega Contractors

- ❑ Syndicator
 - ❑ Richman Housing

Mercy Haven, Inc.

Mercy Gardens



56 Adams Road, Central Islip

- ❑ 22 units, individuals and families
 - ❑ 22 supportive units, individuals and families
- ❑ Funding
 - ❑ *Capital:* OMH, HHAP, FHLB
 - ❑ *Operations/ Services:* OMH ESSHI
- ❑ Architect
 - ❑ Fusion Architects
- ❑ Contractor
 - ❑ Michael Borruto
General Contractor

New Destiny Housing Corporation

The Kira



153-24 90th Road, Jamaica, Queens

- ❑ 139 units, families
 - ❑ 69 supportive units, families
- ❑ Funding
 - ❑ *Capital:* HFA, HCR
 - ❑ *Operations/Services:* OTDA
- ❑ Architect
 - ❑ GF55
- ❑ Contractor
 - ❑ Jamaica Builders

Postgraduate Center for Mental Health

Washington Avenue



972 Washington Avenue, Bronx

- ❑ 106 units, individuals and families
 - ❑ 65 supportive units, individuals and families
- ❑ Funding
 - ❑ *Capital:* HFA, HCR, HPD
 - ❑ *Operations/ Services:* OMH
- ❑ Architect
 - ❑ EQ Architects
- ❑ Contractor
 - ❑ The Penta Group
- ❑ Syndicator
 - ❑ Boston Financial

RUPCO, Inc.

Landmark



300 Flatbush Avenue, Kingston

- ❑ 66 units, individuals
 - ❑ 35 supportive units, individuals
- ❑ Funding
 - ❑ *Capital:* HFA, HCR, FHLB, NEF, NYSERDA, LISC, TD FOUNDATION, NYS Historic Credits
 - ❑ *Operations/ Services:* NYS OMH ESSHI
- ❑ Architect
 - ❑ Dutton Architecture
- ❑ Contractor
 - ❑ AHC
- ❑ Syndicator
 - ❑ National Equity Fund, Inc.

Saint Joseph's Medical Center School Street/Concern



- ❑ 80 units, individuals and families
 - ❑ 48 supportive units, individuals
- ❑ Funding
 - ❑ *Capital:* HFA, HCR, HHAP, CDBG, OMH
 - ❑ *Operations/ Services:* OMH ESSHI
- ❑ Architect
 - ❑ ESKW Architects
- ❑ Contractor
 - ❑ Mountco Construction
- ❑ Syndicator
 - ❑ Richman Housing

10 School St, Yonkers

Services for the UnderServed

Jerome Court



1769 Jerome Avenue, Bronx

- 175 units, individuals and families
 - 105 supportive units, individuals
- Funding
 - *Capital:* HPD, HDC, Enterprise
 - *Operations/Services:* NYC 15/15
- Architect
 - Marvel Architects
- Contractor
 - Lendlease
- Syndicator
 - Enterprise Community Partners

Transitional Service for New York, Inc.

The Mieles



- ❑ 70 units, individuals and families
 - ❑ 42 supportive units, individuals
- ❑ Funding
 - ❑ *Capital:* HPD, RESO A – Queens BP, TD Bank, CPC, CSH
 - ❑ *Operations/ Services:* NYC 15/15
- ❑ Architect
 - ❑ Amie Gross Architects
- ❑ Contractor
 - ❑ Raccinelli Contractors
- ❑ Syndicator
 - ❑ Red Stone Equity Partners

161-01 89th Avenue, Jamaica

Unique People Services, Inc.

2050 Grand Concourse



2050 Grand Concourse, Bronx

- ❑ 96 units, individuals and families
 - ❑ 58 supportive units, individuals
- ❑ Funding
 - ❑ *Capital:* HFA, HCR, HHAP, LISC, CSH, NYSERDA
 - ❑ *Operations/ Services:* NYS OMH ESSHI, HASA NY/NY III
- ❑ Architect
 - ❑ Magnusson Architecture and Planning
- ❑ Contractor
 - ❑ Bruno Frustaci
- ❑ Syndicator
 - ❑ Richman Housing

Unity House of Troy, Inc.

Hillside View



415 River Street, Troy

- ❑ 51 units, individuals and families
 - ❑ 26 supportive units, individuals and families
- ❑ Funding
 - ❑ *Capital:* HCR, HCR, Leviticus Fund, NYSEDA, NBT Bank
 - ❑ *Operations/Services:* OMH
- ❑ Architect
 - ❑ SWBR Architects & Engineers, P.C.
- ❑ Contractor
 - ❑ BBL Construction Services

WellLife Network

Cypress Point



80-97 Cypress Avenue, Glendale

- ❑ 66 units, individuals and families
 - ❑ 40 supportive units, individuals and families
- ❑ Funding
 - ❑ *Capital:* HPD, CSH, Merchants Capital, Freddie Mac
 - ❑ *Operations/Services:* NYC 15/15
- ❑ Architect
 - ❑ UAI and Monica Lopez
- ❑ Contractor
 - ❑ J. Riso and Sons
- ❑ Syndicator
 - ❑ Richman Housing

YWCA of the Niagara Frontier Tremont



49 Tremont Street, Niagara

- ❑ 12 units, individuals
 - ❑ 12 supportive units, individuals
- ❑ Funding
 - ❑ *Capital:* HHAP, HCR, Yahoo Foundation
 - ❑ *Operations/Services:* OTDA ESSHI
- ❑ Architect
 - ❑ Armitage Architecture
- ❑ Contractor
 - ❑ Mulvey Construction

2022

Openings of Affordable Housing with Supportive Set-Asides



2022

Openings of Affordable Housing with Supportive Set-Asides

Sendero Verde B

L+M & Jonathan
Rose

Services: Acacia
Network

- 361 units, families
 - 36 supportive units



60 East 112th Street, Manhattan

2022

Openings of Affordable Housing with Supportive Set-Asides

The Grand

Thorobird Companies

Services: ACMH

- 138 units, families & individuals
 - 41 supportive units



220 East 178th, Bronx

2022

Openings of Affordable Housing with Supportive Set-Asides

Bishop Valero Senior Residence

Catholic Charities of
Brooklyn & Queens

- 103 units, individuals
 - 31 supportive units



23-11 31st Road, Queens

2022

Openings of Affordable Housing with Supportive Set-Asides

Beach 21st Street

**The Community
Builders**

Services: CAMBA

- ❑ 224 units, families & individuals
 - ❑ 23 supportive units



1027 Beach 21st Street, Queens

2022

Openings of Affordable Housing with Supportive Set-Asides

Gleneagle Green

**D&F Development
Group**

**Services: Concern
Housing**

- ❑ 69 units, families & individuals
 - ❑ 13 supportive units



511 Atlantic Ave, Bellport

2022

Openings of Affordable Housing with Supportive Set-Asides

270 on East

CSD Housing LLC

**Services: Eagle Star
and Episcopal
SeniorLife
Communities**

- ❑ 112 units, individuals
 - ❑ 50 supportive units



270 East Ave, Rochester

2022

Openings of Affordable Housing with Supportive Set-Asides

980 Westchester

The Doe Fund

- 151 units, individuals
 - 31 supportive units



980 Westchester Ave, Bronx

2022

Openings of Affordable Housing with Supportive Set-Asides



483 Herkimer

**Federation of
Organizations**

- 121 units, individuals
- 60 supportive units

483 Herkimer Street, Brooklyn

2022

Openings of Affordable Housing with Supportive Set-Asides



Clifford Avenue, Rochester

*Pueblo Nuevo I and
2*

**Ibero-American
Action League**

**Services: YWCA of
Rochester &
Monroe County**

- ❑ 104 units, individuals
 - ❑ 25 supportive units

2022

Openings of Affordable Housing with Supportive Set-Asides



320 West Buffalo Street, Ithaca

Founders Way

**Ithaca
Neighborhood
Housing Services,
Inc.**

**Services: Salvation
Army of the
Syracuse Area**

- ❑ 75 units, individuals
- ❑ 22 supportive units

New Destiny Housing Corporation Raven Hall/Georgica



2006 Surf Avenue, Brooklyn

Raven Hall

Georgica Green Ventures

**Services: New Destiny
Housing Corporation**

- 216 units, families
- 77 supportive units

2022

Openings of Affordable Housing with Supportive Set-Asides



Salina Street, Pulaski

*Selkirk Landing
Apartments*

**Oswego County
Opportunities, Inc.**

- ❑ 64 units, individuals
- ❑ 20 supportive units

2022

Openings of Affordable Housing with Supportive Set-Asides



*285 Medley Centre Parkway,
Rochester*

*Skyview Irondequoit
Mall*

**PathStone Housing
Corporation**

**Services: Rochester
Regional Health**

- 171 units, individuals
- 78 supportive units

2022

Openings of Affordable Housing with Supportive Set-Asides



Bergen Place

**Selfhelp Community
Services, Inc.**

- ❑ 44 units, families
 - ❑ 14 supportive units

81 South Bergen Place, Freeport

2022

Openings of Affordable Housing with Supportive Set-Asides



*Brookdale/Vital
Brooklyn*

**The New York
Foundling**

- 160 units, individuals
- 36 supportive units

535 East 98th Street, Brooklyn

2022

Openings of Affordable Housing with Supportive Set-Asides



Marcus Garvey Phase I, Building B

**Women in Need,
Inc.**

- 173 units, individuals and families
 - 52 supportive units

169-215 Livonia Avenue

2022

Openings of Affordable Housing with Supportive Set-Asides



1403 Gateway Boulevard, Queens

*The Harriet Tubman
Building*

Related Companies

**Services: Women in Need,
Inc.**

63 supportive units, families